

STATION	CHORD	CHORD BEARING	CHORD DIST.	CHORD BEARING
1	10.0000	N 00°00'00" E	10.0000	N 00°00'00" E
2	10.0000	N 00°00'00" E	10.0000	N 00°00'00" E
3	10.0000	N 00°00'00" E	10.0000	N 00°00'00" E
4	10.0000	N 00°00'00" E	10.0000	N 00°00'00" E
5	10.0000	N 00°00'00" E	10.0000	N 00°00'00" E
6	10.0000	N 00°00'00" E	10.0000	N 00°00'00" E
7	10.0000	N 00°00'00" E	10.0000	N 00°00'00" E
8	10.0000	N 00°00'00" E	10.0000	N 00°00'00" E
9	10.0000	N 00°00'00" E	10.0000	N 00°00'00" E
10	10.0000	N 00°00'00" E	10.0000	N 00°00'00" E

STATION	CHORD	CHORD BEARING	CHORD DIST.	CHORD BEARING
11	10.0000	N 00°00'00" E	10.0000	N 00°00'00" E
12	10.0000	N 00°00'00" E	10.0000	N 00°00'00" E
13	10.0000	N 00°00'00" E	10.0000	N 00°00'00" E
14	10.0000	N 00°00'00" E	10.0000	N 00°00'00" E
15	10.0000	N 00°00'00" E	10.0000	N 00°00'00" E
16	10.0000	N 00°00'00" E	10.0000	N 00°00'00" E
17	10.0000	N 00°00'00" E	10.0000	N 00°00'00" E
18	10.0000	N 00°00'00" E	10.0000	N 00°00'00" E
19	10.0000	N 00°00'00" E	10.0000	N 00°00'00" E
20	10.0000	N 00°00'00" E	10.0000	N 00°00'00" E

STATION	CHORD	CHORD BEARING	CHORD DIST.	CHORD BEARING
21	10.0000	N 00°00'00" E	10.0000	N 00°00'00" E
22	10.0000	N 00°00'00" E	10.0000	N 00°00'00" E
23	10.0000	N 00°00'00" E	10.0000	N 00°00'00" E
24	10.0000	N 00°00'00" E	10.0000	N 00°00'00" E
25	10.0000	N 00°00'00" E	10.0000	N 00°00'00" E
26	10.0000	N 00°00'00" E	10.0000	N 00°00'00" E
27	10.0000	N 00°00'00" E	10.0000	N 00°00'00" E
28	10.0000	N 00°00'00" E	10.0000	N 00°00'00" E
29	10.0000	N 00°00'00" E	10.0000	N 00°00'00" E
30	10.0000	N 00°00'00" E	10.0000	N 00°00'00" E

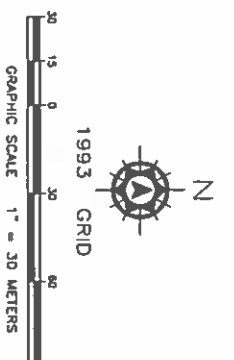
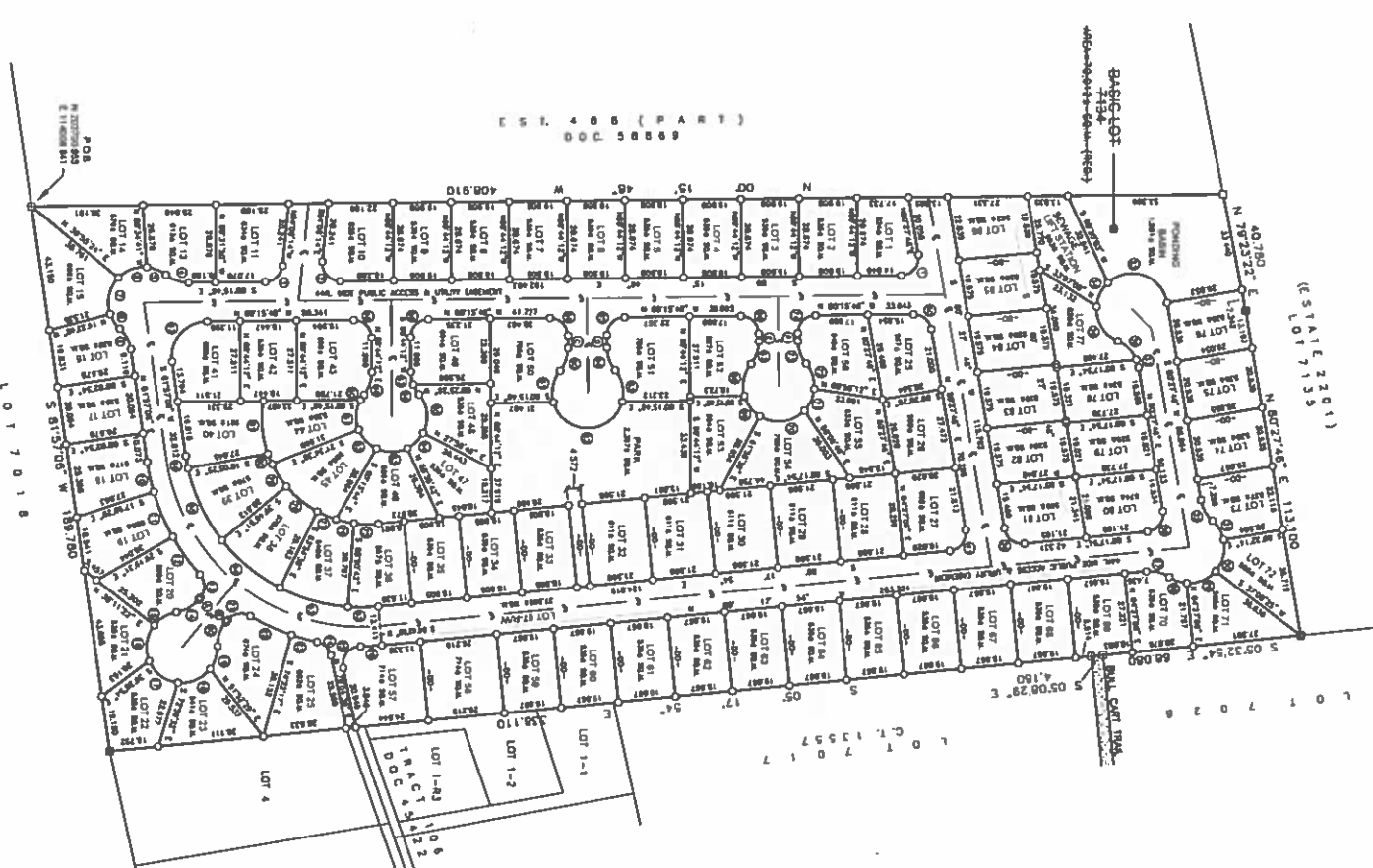
STATION	CHORD	CHORD BEARING	CHORD DIST.	CHORD BEARING
31	10.0000	N 00°00'00" E	10.0000	N 00°00'00" E
32	10.0000	N 00°00'00" E	10.0000	N 00°00'00" E
33	10.0000	N 00°00'00" E	10.0000	N 00°00'00" E
34	10.0000	N 00°00'00" E	10.0000	N 00°00'00" E
35	10.0000	N 00°00'00" E	10.0000	N 00°00'00" E
36	10.0000	N 00°00'00" E	10.0000	N 00°00'00" E
37	10.0000	N 00°00'00" E	10.0000	N 00°00'00" E
38	10.0000	N 00°00'00" E	10.0000	N 00°00'00" E
39	10.0000	N 00°00'00" E	10.0000	N 00°00'00" E
40	10.0000	N 00°00'00" E	10.0000	N 00°00'00" E

STATION	CHORD	CHORD BEARING	CHORD DIST.	CHORD BEARING
41	10.0000	N 00°00'00" E	10.0000	N 00°00'00" E
42	10.0000	N 00°00'00" E	10.0000	N 00°00'00" E
43	10.0000	N 00°00'00" E	10.0000	N 00°00'00" E
44	10.0000	N 00°00'00" E	10.0000	N 00°00'00" E
45	10.0000	N 00°00'00" E	10.0000	N 00°00'00" E
46	10.0000	N 00°00'00" E	10.0000	N 00°00'00" E
47	10.0000	N 00°00'00" E	10.0000	N 00°00'00" E
48	10.0000	N 00°00'00" E	10.0000	N 00°00'00" E
49	10.0000	N 00°00'00" E	10.0000	N 00°00'00" E
50	10.0000	N 00°00'00" E	10.0000	N 00°00'00" E

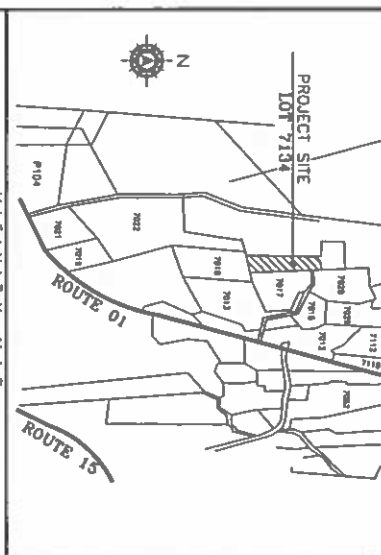
STATION	CHORD	CHORD BEARING	CHORD DIST.	CHORD BEARING
51	10.0000	N 00°00'00" E	10.0000	N 00°00'00" E
52	10.0000	N 00°00'00" E	10.0000	N 00°00'00" E
53	10.0000	N 00°00'00" E	10.0000	N 00°00'00" E
54	10.0000	N 00°00'00" E	10.0000	N 00°00'00" E
55	10.0000	N 00°00'00" E	10.0000	N 00°00'00" E
56	10.0000	N 00°00'00" E	10.0000	N 00°00'00" E
57	10.0000	N 00°00'00" E	10.0000	N 00°00'00" E
58	10.0000	N 00°00'00" E	10.0000	N 00°00'00" E
59	10.0000	N 00°00'00" E	10.0000	N 00°00'00" E
60	10.0000	N 00°00'00" E	10.0000	N 00°00'00" E

STATION	CHORD	CHORD BEARING	CHORD DIST.	CHORD BEARING
61	10.0000	N 00°00'00" E	10.0000	N 00°00'00" E
62	10.0000	N 00°00'00" E	10.0000	N 00°00'00" E
63	10.0000	N 00°00'00" E	10.0000	N 00°00'00" E
64	10.0000	N 00°00'00" E	10.0000	N 00°00'00" E
65	10.0000	N 00°00'00" E	10.0000	N 00°00'00" E
66	10.0000	N 00°00'00" E	10.0000	N 00°00'00" E
67	10.0000	N 00°00'00" E	10.0000	N 00°00'00" E
68	10.0000	N 00°00'00" E	10.0000	N 00°00'00" E
69	10.0000	N 00°00'00" E	10.0000	N 00°00'00" E
70	10.0000	N 00°00'00" E	10.0000	N 00°00'00" E

STATION	CHORD	CHORD BEARING	CHORD DIST.	CHORD BEARING
71	10.0000	N 00°00'00" E	10.0000	N 00°00'00" E
72	10.0000	N 00°00'00" E	10.0000	N 00°00'00" E
73	10.0000	N 00°00'00" E	10.0000	N 00°00'00" E
74	10.0000	N 00°00'00" E	10.0000	N 00°00'00" E
75	10.0000	N 00°00'00" E	10.0000	N 00°00'00" E
76	10.0000	N 00°00'00" E	10.0000	N 00°00'00" E
77	10.0000	N 00°00'00" E	10.0000	N 00°00'00" E
78	10.0000	N 00°00'00" E	10.0000	N 00°00'00" E
79	10.0000	N 00°00'00" E	10.0000	N 00°00'00" E
80	10.0000	N 00°00'00" E	10.0000	N 00°00'00" E
81	10.0000	N 00°00'00" E	10.0000	N 00°00'00" E



- BEARING DIST.
- - S 89°28'38" E 8.912
  - - N 89°28'38" W 8.912
  - - N 89°44'17" E 4.462
  - - S 89°44'17" W 4.462
  - - N 89°44'17" E 2.012
  - - S 89°44'17" W 2.012



**NOTES**

- SURVEY WAS BASED ON ROUND CORNERS AS SHOWN.
- ALL DISTANCES ARE IN METERS, UNLESS OTHERWISE NOTED.
- BEARING AND DISTANCES ARE FROM OLD SURVEY RECORD DATA.
- ALL DISTANCES ARE FROM THE CENTER OF THE ROAD.
- ZONING IS UNDESIGNATED. SUBJECT LOTS ARE RETURNED - ANCESTRAL LAND.
- SUBJECT LOTS IS WITHIN NORTHERN ADJACENT (P-2).

**REFERENCES**

- LAND REGISTRATION SURVEY OF BASK LOT NO 7134 PREPARED BY RL5 28 (DN) NO 5187981, DOC NO 181816.

**SYMBOLS**

- ▲ GCM STATION
- REFERENCE POINT
- PRE MARK CONC NON FOUND
- L&L CONC NON FOUND
- L&L CONC NON FOUND SET BY
- SHARED '95.19"

**CERTIFICATION**

I, FRANK L G CASTRO, HEREBY CERTIFY THAT THIS MAP WAS PREPARED BY ME OR UNDER MY DIRECT SUPERVISION THAT IT IS IN ACCORDANCE WITH ALL APPLICABLE LAWS AND REGULATIONS THAT I AM RESPONSIBLE FOR THE ACCURACY OF ALL DATA AND INFORMATION SHOWN HEREON. I ALSO CERTIFY THAT ALL THE POINTS AND OR THE CHARACTER AND OCCUPY THE POSITIONS INDICATED ON THIS MAP.

FRANK L G CASTRO, PLS NO. 19 DATE: SEP 30 2016

APPROVAL PRESUMED TO TITLE 21, GOV ANNOTATED, CHAPTER 62, SUBDIVISION LAW

HARVIN G AGUIAR, CHIEF SURVEYOR/CHIEF OF ENGINEERS DATE:

**FLGC**

**FRANK L G CASTRO**  
PROFESSIONAL LAND SURVEYOR NO. 19  
I S L A N D O F U A I

PROPOSED KQA DEVELOPMENT SITE  
TENTATIVE SUBDIVISION SKETCH  
OF  
LOT 7134  
MUNICIPALITY OF YGOD

PREPARED FOR: SATISFACTORY TO & APPROVED BY

SCALE: SEE PLAN  
SHEET NO. 1 OF 1

REVISION	DATE	BY	APPROVED DATE